

PART OF THE **DURAN**® BOTTLE SYSTEM

TILTING

DURAN® *TILT* BOTTLE



**DURAN
WHEATON
KIMBLE**

Excellence in your hands

DURAN® TILT MEDIA BOTTLE



GL 56



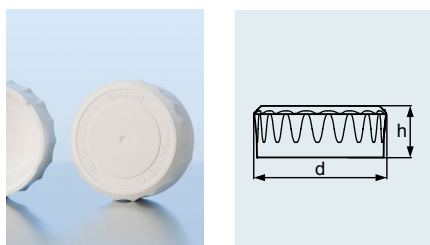
The DURAN® TILT bottle has two positions: upright for filter sterilization or storage, and tilted at 45° for pipetting. The bottle systems allows working with cell culture media under sterile conditions in biosafety cabinets and clean hoods.

Cat. No.	Capacity (mL)	DIN Thread (GL)	d (OD) (mm)	h (mm)	Pack Unit
with screw cap and pouring ring from PP (blue)					
21 891 44 59	500	56	124	148	4

DURAN® TILT SCREW CAP



GL 56, from PP



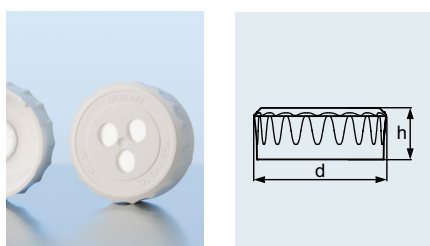
The ergonomic cap is easy to open and close. Made from non-cytotoxic materials.

Cat. No.	DIN Thread (GL)	d (OD) (mm)	h (mm)	Colour	Pack Unit
29 229 56 02	56	62	27	white	10

DURAN® TILT SCREW CAP



GL 56, Sterile venting membrane



DURAN® TILT Laboratory bottles are ideal containers for sterilising and storing media or buffer solutions. However, it is strongly recommended that during the autoclaving cycle the caps are only loosely tightened. Heating times are reduced if the steam is easily able to penetrate the contents of the bottle. Loose caps also reduce the risk of failure due to pressure build up inside the bottle, which can reach 400 kPa (absolute). In addition, tightening the screw caps immediately after autoclaving, will result in a vacuum caused by the cooling of the steam. This can lead to bottle failure, and is an especially important consideration for bottles larger than 5 litres. To overcome these limitations, the sterile venting membrane screw caps were developed. The screw cap can be tightly closed as the membrane permits an automatic sterile gas exchange, allowing safe pressure equalisation during the autoclave cycle, and at the same time ensuring the sterility of the bottle contents.

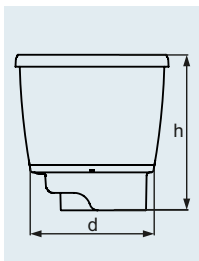
Cat. No.	DIN Thread (GL)	d (OD) (mm)	h (mm)	Colour	Pack Unit
29 118 56 09	56	62	27	white	4



DURAN® TILT BOTTLE TOP FILTER UNIT



GL 45



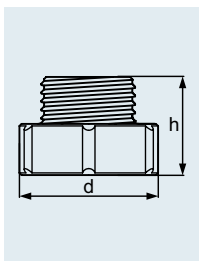
Designed for sterilization or clarification of aqueous cell culture media. Supplied as a filter funnel unit for use with the DURAN® TILT bottle (with GL 45 thread adaptor) or 45 mm media bottles. Comes in three different asymmetric pore sizes (0.1 µm, 0.2 µm, or 0.45 µm). Raised moulded graduation marks for easy volume reading. Manufactured in a Class 100,000 clean room from Class VI, non-cytotoxic materials. Supplied sterile.

Cat. No.	Description	Capacity (mL)	DIN Thread (GL)	d (OD) (mm)	h (mm)	Pack Unit
29 270 28 18	PES 0.1 µm	500	45	92	103	12
29 270 28 26	PES 0.2 µm	500	45	92	103	12
29 270 28 42	PES 0.45 µm	500	45	92	103	12

DURAN® TILT ADAPTOR



GL 45 / GL 56, from PTFE



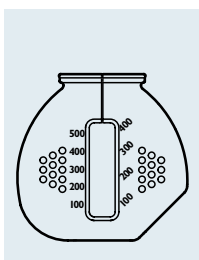
The re-usable adaptor (GL 45 external / GL 56 internal) allows the use of the DURAN® TILT bottle with 45 mm filtration units for the filter sterilisation of cell culture media. Manufactured from inert PTFE; can be autoclaved and depyrogenised at 300 °C.

Cat. No.	Thread	d (OD) (mm)	h (mm)	Colour	Pack Unit
29 119 56 01	GL 45 / GL 56	65	46	white	1

DURAN® TILT LIGHT SHIELD



white, from silicone



The DURAN® TILT Light Shield is a white silicone sleeve that covers 94 % of the bottle surface. The sleeve has a number of protective functions: it blocks damaging ultraviolet light (UV), protects the glass surface from damage, and facilitates safer handling. DURAN® TILT Light Shield includes four GL 56 Bottle Tags (Orange, Yellow, Blue, Purple) made from silicone.

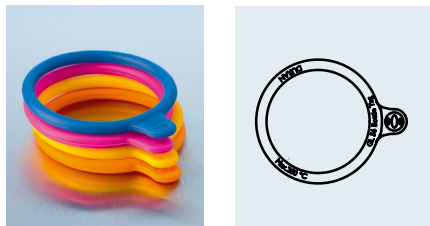
Cat. No.	Colour	Pack Unit
29 243 56 01	white	4



DURAN® TILT BOTTLE TAG

Tmax. 200 °C A 121 °C

GL 56, from silicone



The Bottle Tags can be used on their own for colour identification or to secure the protective Light Shield around the bottle. The GL 56 Bottle Tags are available in four colours: orange, yellow, blue and purple.

Cat. No.	DIN Thread (GL)	Colour	Pack Unit
29 243 56 26	56	orange	20
29 243 56 34	56	yellow	20
29 243 56 59	56	blue	20
29 243 56 67	56	purple	20

DURAN® TILT GL 56 CAP LABELS

A 121 °C Tmax. 150 °C

self-adhesive



Careful labelling is very important to prevent mix-ups and mistakes. The GL 56 self-adhesive polyester cap labels can be used to clearly indicate the separate bottles of media for each cell line, preventing possible cross-contamination. A pack contains 60 screw cap labels.

Cat. No.	Description	Pack Unit
29 401 56 04	White polyester	1

